

WILLOW WOOD DEVELOPMENT



w heartwood®
PROPERTIES

CONTENT

01. INTRODUCTION

02. LOCALITY

03. DESIGN FEATURES

04. SITE PLAN

05. TYPICAL PLANS

06. SECTIONS

07. CONTACT INFORMATION



INTRODUCTION

Heartwood Properties are proud to introduce the final phase of Willow Wood Office Park, comprising 1502m² of AAA-office space in Fourways, Johannesburg. The office suites vary in size from 130m² to 1502m². This phase follows the successful completion of the first three phases of 5145m² for Regus Spaces, Cronimet Chrome SA, Habitat Magazine and several other tenants.

JOHN WHALL

Unit 8 Tonquani House, 6 Gardner Williams Avenue
Paardevelei, Somerset West, 7130

T: +27 (0)21 035 1744







E: john@heartwoodprop.co.za

www.heartwoodproperties.co.za



CORNER CEDAR ROAD & 3RD STREET, FOURWAYS

LEGEND

-  Hospital
-  Hotel
-  Golf Estate
-  Dainfern College
-  Conference Centre
-  Regus Spaces



LOCATION

CORNER PETER PLACE AND BRIAN STREET, FOURWAYS

The Office Park is situated in Cedar Road adjacent to Broadacres Shopping Centre. The site has excellent exposure at a prominent intersection along Cedar Road. It is in close proximity to Cedar Square, Fourways Mall, Dainfern Estate, Steyn City and is within a 10 minute drive from Lanseria International Airport.



DESIGN FEATURES

These new offices will enjoy a flexible internal layout suitable for smaller businesses or for a bigger business looking for a stand-alone building in an existing secure office park. The office park has newly planted gardens with established trees which enhance this lovely work environment. There is also an established coffee shop on the premises which provides a convivial meeting place.

Additional features:

- Excellent 24-hour security on site with electric fencing and access control.
- Back-up power supplied via a diesel generator.
- All offices have their own balconies.
- Basement and shade parking supplied (five bays per 100m²) with additional parking available if required.
- Basement store rooms available.



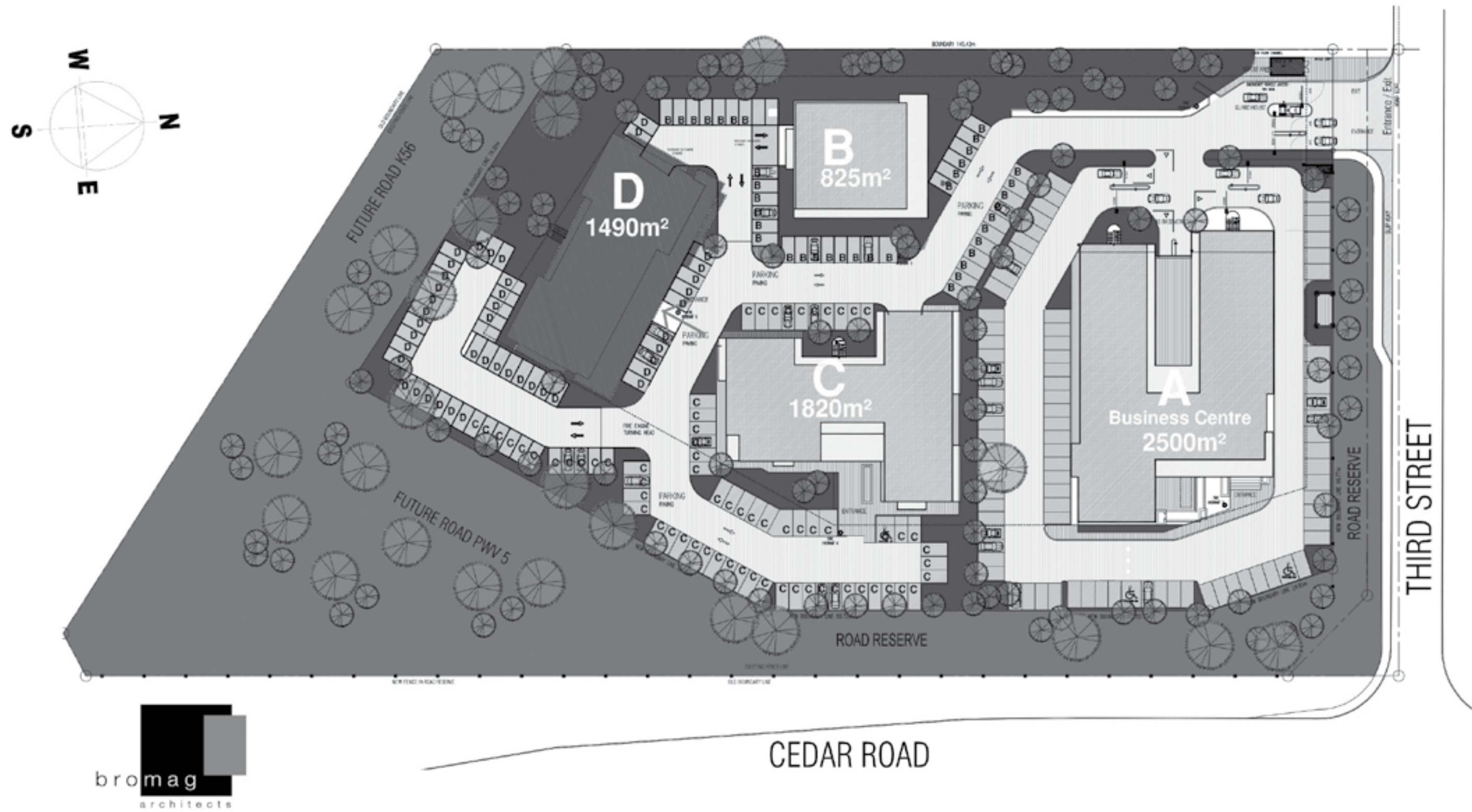
WILLOW WOOD OFFICE PARK



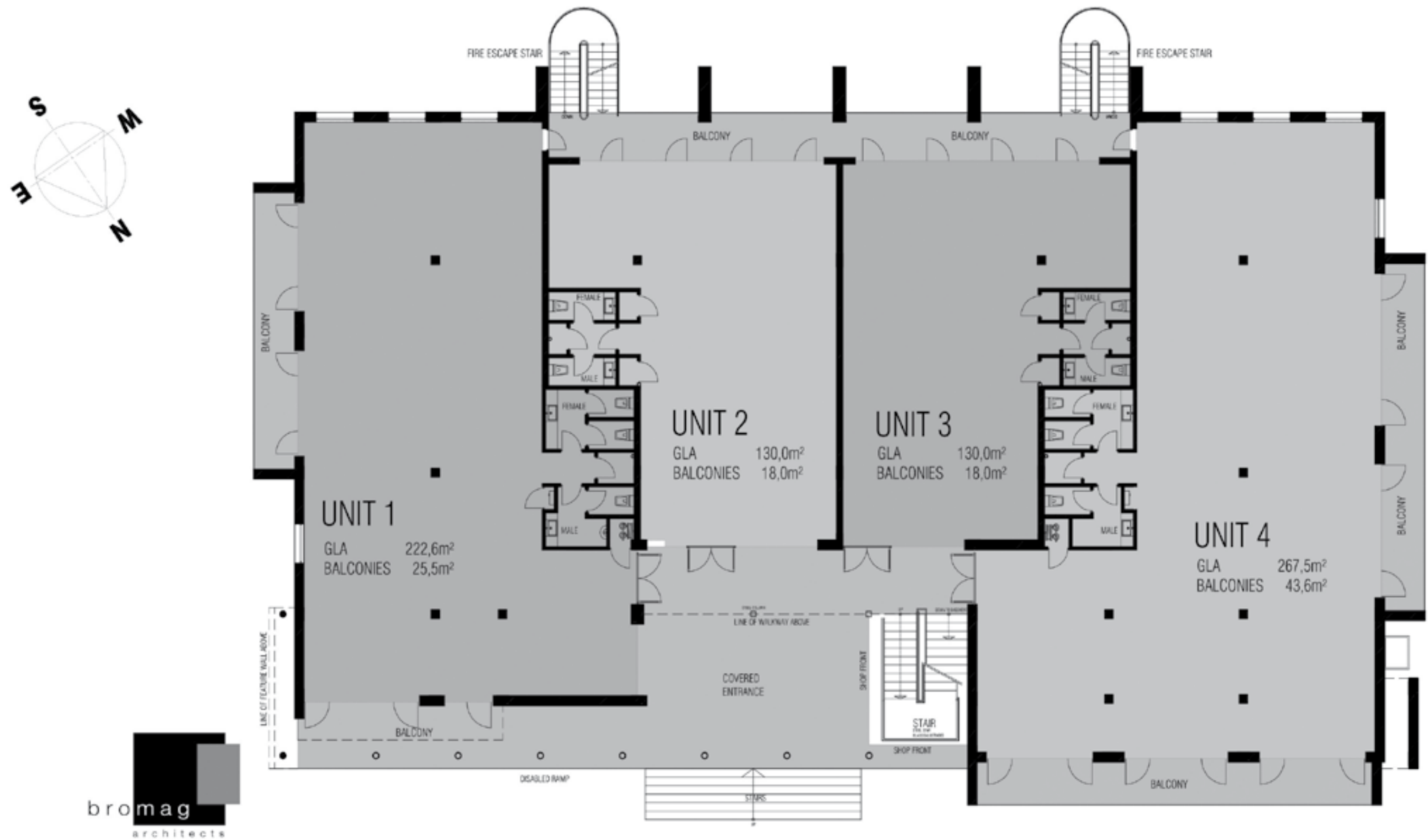
WILLOW WOOD OFFICE PARK



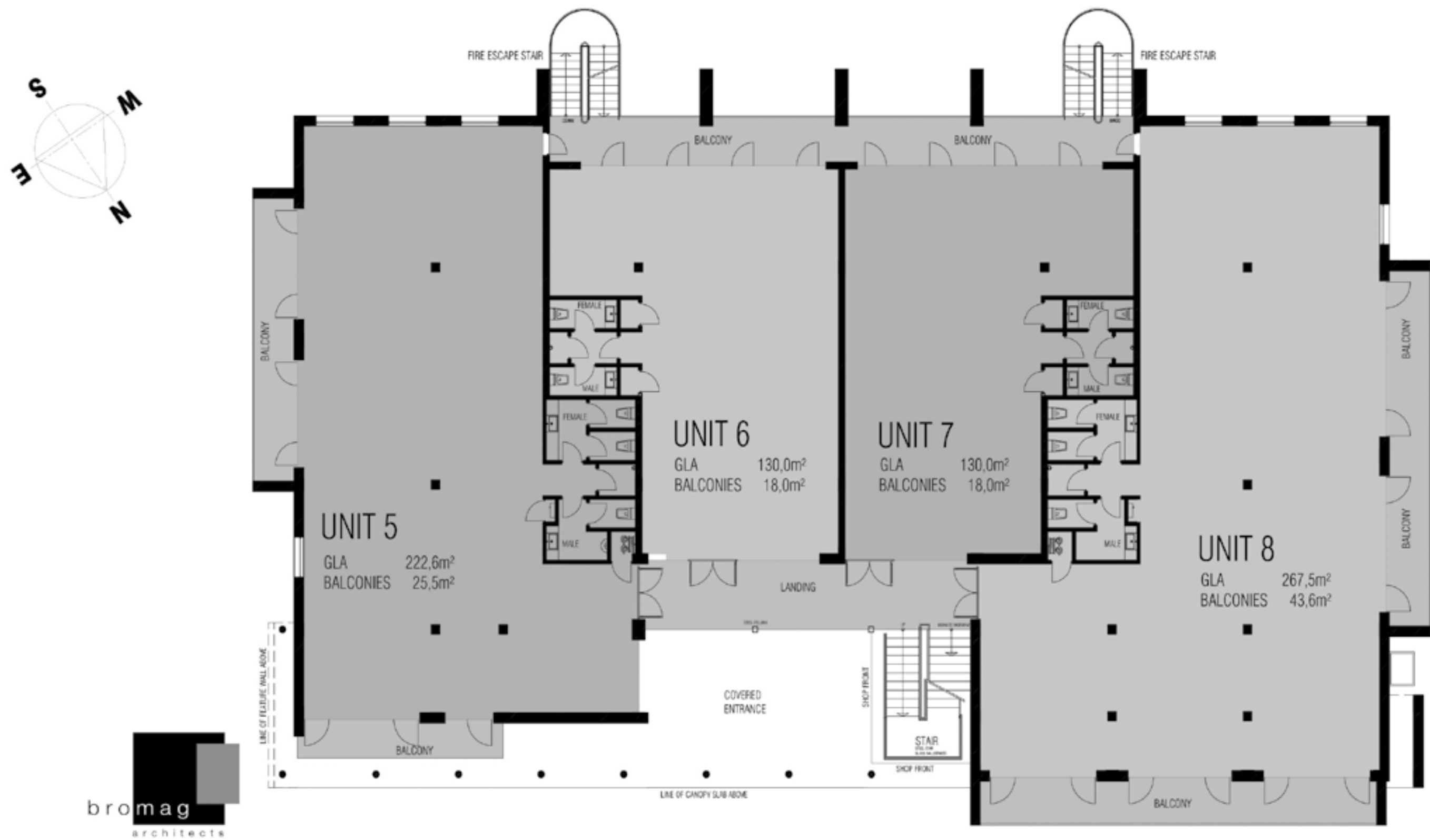
SITE PLAN



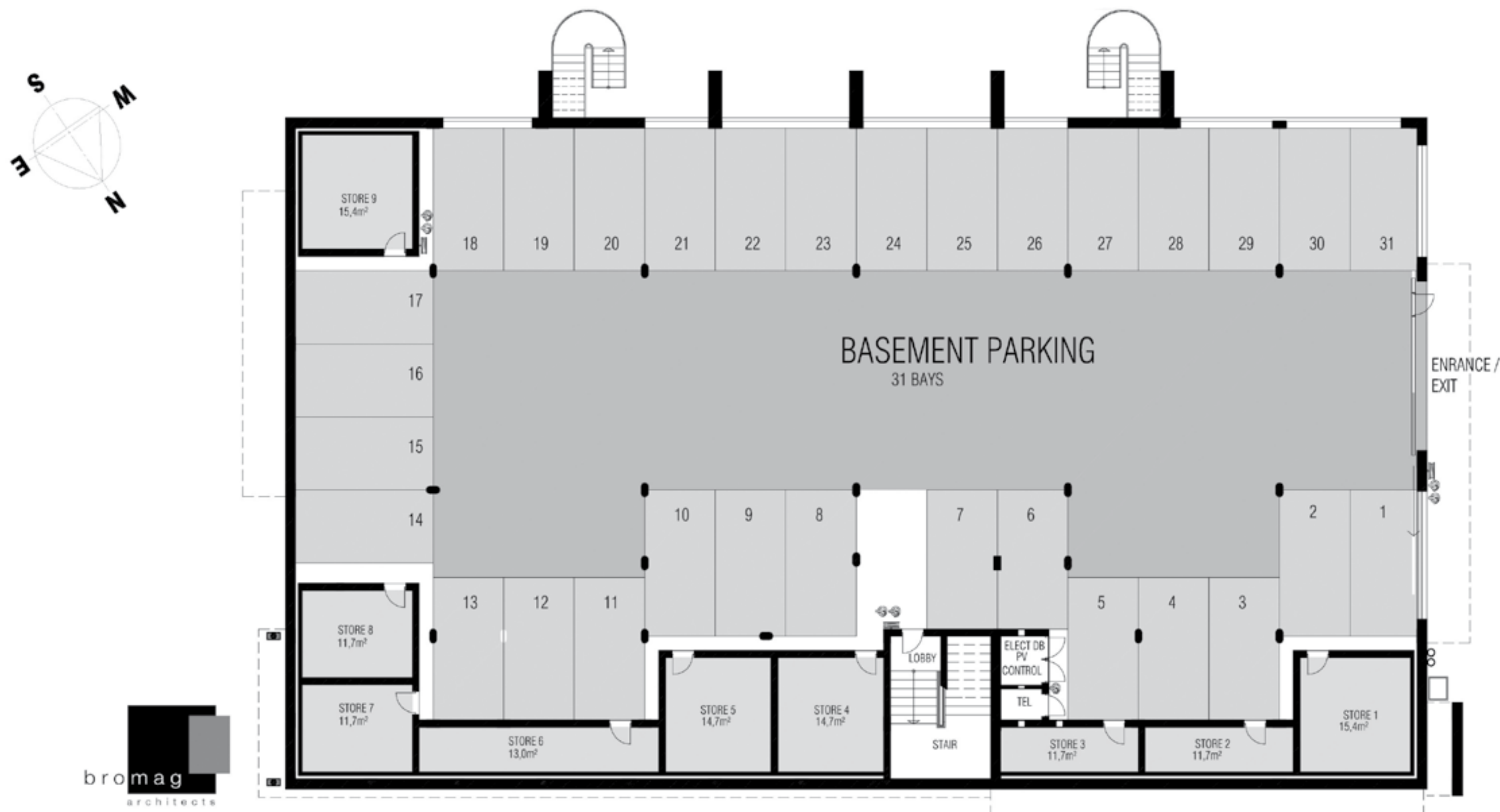
GROUND FLOOR



FIRST FLOOR



BASEMENT



MEET, WORK, CONNECT, REFRESH



Unit 8 Tonquani House, 6 Gardner Williams Avenue
Paardevlei, Somerset West, 7130

T: +27 (0)21 035 1744

E: john@heartwoodprop.co.za

www.heartwoodproperties.co.za

